

ADDITIONAL MODULES FOR DVS SOFTWARE

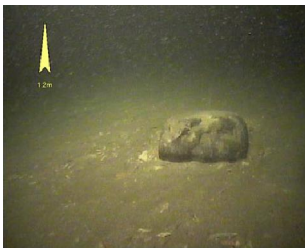
Description

Additional modules could be integrated to "DVS Recorder" to improve functionality of the DVS software.

Valid for DVS-Pro and DVS-T.

ROV Targeting Module

The additional module of ROV targeting is used to overlay direction of the target and distance to target on video stream. The operator should enter target coordinate to obtain direction and distance in the overlay.



Features

- Integration to "DVS Recorder" software
- Drawing direction pointer to target in real time
- Drawing distance to target in real time
- Target coordinates input in different formats
- Ability to place arrow in any location on the screen
- Arrow properties adjustment (color, font, line width and other)
- Arrow type selection

Pilot Drawings Module

"Pilot Drawings Module" is a DVS external visualization module. This module is used to overlay ROV pilot drawings on video stream.



Features

- Integration to "DVS Recorder" software
- Drawing ROV parameters in real time
- Large set of visualization tools for pilot drawings (heading, depth, pitch/roll line, thrusters, lights, pan and tilt, text message)
- Ability to place a tool in any location on the screen
- Tool properties adjustment (color, font, line width and others)