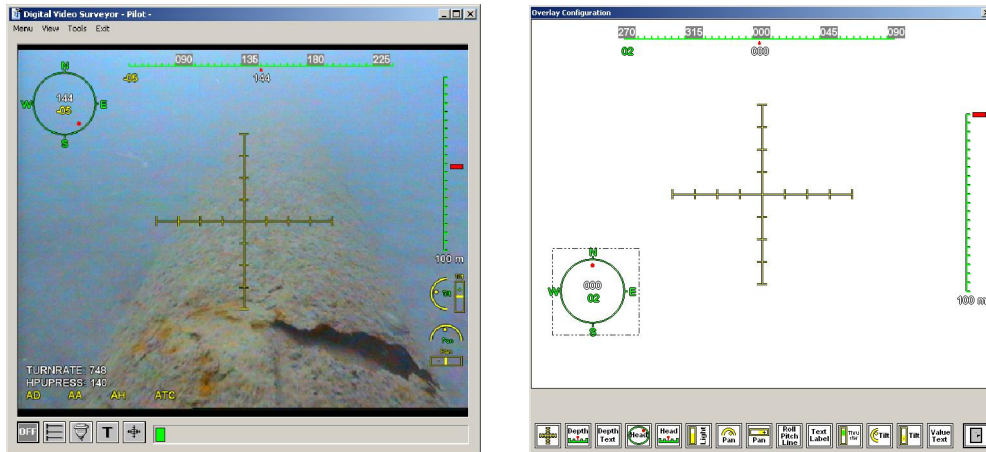


**DVS PILOT**

**Description**

"DVS Pilot" software is the complete software for ROV pilot overlay drawings. Does not require DVS Software Package installed.



**Features**

- Overlaying ROV data on captured video data.
- Supporting DV and PAL video streams.
- Supporting any DV and BT8x8 compatible video capture devices.
- Interpretation of the ASCII data stream coming to serial port (RS-232/422/485) and video overlay.
- Output of video stream either SVGA-video or analog video using analog output on the video controller.

**Minimal System Requirements**

CPU	Intel Pentium-IV 2GHz
RAM	256 MB
Video	64 MB
Video Capture Device	Conexant BT8x8 based card, or IEEE 1394 DV device
Serial Ports	Serial ports (COM) for external device connection
Operating System	Microsoft Windows XP
DirectX	DirectX 8.0 and higher